

# GYPREX<sup>®</sup>

## 9 mm CEILING TILES

### Advantages



**Durability:** Gyprex<sup>®</sup> is a robust tile with resistance to scratches and dents.



**Ease of maintenance:** The vinyl surface of Gyprex<sup>®</sup> ceiling tiles can be cleaned using a damp cloth with water and a mild detergent.



**Recyclability:** Gyprex<sup>®</sup> ceiling products' core is manufactured from natural, recyclable materials.

Gyprex<sup>®</sup> is a vinyl-faced tile with a gypsum core combined with Gypframe<sup>®</sup> exposed ceiling grid to form a lay-in tile suspended ceiling. It has a tough washable vinyl finish, bonded to the RhinoBoard<sup>®</sup> and it is ideal for use in a range of commercial and residential ceiling applications. The gypsum core is 100% recyclable. Available in white and fissured finish.

# GYPREX®

## 9 mm CEILING TILES



Description	Value	Reference standard
Thickness	9 mm	-
Edge Type	Square (A)	-
Dimensions	9 mm - (1200 x 600); (600 x 600)	-
Weight (kg/m <sup>2</sup> )	9 mm - Approx. 5.40 kg/m <sup>2</sup>	-
Reaction to fire	9 mm - Combustible B classification	SANS 10177-5

## Usage

Ideally suited for environments where economical installation and low maintenance are primary considerations.

Consult the latest version of SANS 10400-T for suitable areas of use.

## Ceiling Tile Performance

### Fire Performance

The Gyprex® tile does not provide fire resistance despite having a non-combustible gypsum core.

### Reaction to Fire

Standard	Thickness of tile (mm)	Performance
SANS 10177-5	9 mm	<b>*Combustible</b>

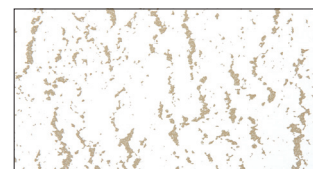
\*According to SANS 10400-T, non-combustible products can be used in all occupancies. **For combustible ceiling tiles, we recommend consulting a building professional to verify the suitability of use in specific applications.**

### Gyprex® 9 mm

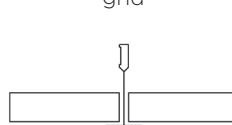
White



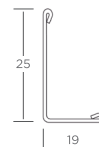
Fissured



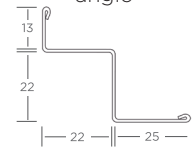
Edge Detail for Gyproframe®  
Essential exposed grid



Trim detail for Gyproc M6 wall angle



Trim detail for Gyproc SM25 recessed wall angle



### Environment

Gyprex® tiles are suitable for use in areas that are not subject to continuous damp conditions. The tiles are not suitable for use above 70% relative humidity, or in temperatures consistently above 49°C. They can be exposed to freezing temperatures without a risk of damage.

### Fixtures

The strength of Gyprex® tiles will support a point load of 1 kg for maximum L/360 deflection. This will normally allow fittings such as spot light or down lighters to be installed without the need for additional support.



**GYPROC** a division of Saint-Gobain  
Construction Products SA (Pty) Ltd

300 Janadel Avenue • Halfway House  
• Midrand 1686 • South Africa

PO Box 50416 • Randjiesfontein  
• 1683 • South Africa

+27 (0)12 657 2800

[www.gyproc.co.za](http://www.gyproc.co.za)

SAINT-GOBAIN CONSTRUCTION  
PRODUCTS SOUTH AFRICA (PTY) LTD.  
Reg no: 1937/010220/07