

# Weber Acetoxy Silicone Multi-purpose



## DESCRIPTION

A one-part, acetoxy-cure silicone sealant designed for general construction and home use. Offers strong adhesion and long-term flexibility, even with joint movement and temperature changes. Resistant to weather, UV, ageing, shrinkage, cracking, and discolouration.



UV Resistant



Anti-fungal and moisture resistant

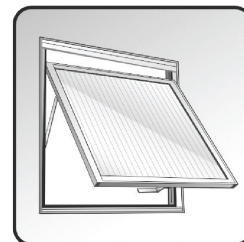
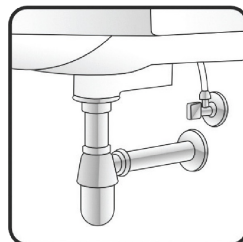
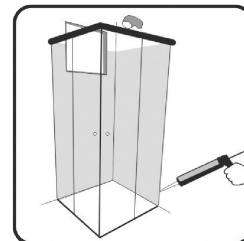
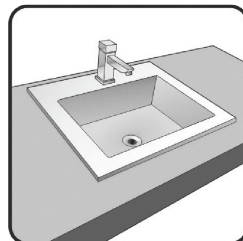


Need an applicator gun

## USES

Sealing around windows and doors

- Bonding glass, metal, and other non-porous surfaces
- Waterproofing in kitchens and bathrooms
- General-purpose sealing in construction and renovation projects
- Suitable for interior and exterior joints exposed to weather



## ADVANTAGES

- This sealant is easy to apply, won't sag or slump during use, and resists cracking over time
- It bonds well to porous surfaces like concrete, brick, and plaster
- It's also suitable for long-term storage without losing performance

## COLOURS

CLEAR

## TYPICAL PHYSICAL PROPERTIES

Density	11 g/cm <sup>3</sup>
Tack-free time	4 min
Sag	0 mm
Shore A Hardness	22
Curing depth (24h)	2 mm
Curing depth (7d)	5 mm
Elongation at break	700%
Tensile strength	0.72MPa

# Acetoxy Silicone

## **SURFACE PREPARATION**

Surfaces must be clean and free of grease and old glue. Mask smooth surfaces to simplify cleanup.

## **BONDING/PRIMING**

No primer required.

## **MIXING**

No mixing needed. Ready to use straight from the tube.

## **COVERAGE**

Dependent on joint size, approximate coverage is 7.7 m per 280 ml cartridge based on a 6 mm x 6 mm joint.

## **APPLICATION**

- Cut the nozzle at an angle and apply the sealant using a caulking gun, pressing firmly to ensure good contact with the surface. Use masking tape on both sides of the joint to keep the edges neat and protect surrounding areas
- For better control, start applying the sealant while pulling the gun toward you
- Tool the joint within five minutes using a spatula dipped in mild soapy water
- Remove the masking tape right after tooling

## **PROTECTION ON COMPLETION**

Ensure full cure before mechanical stress or painting. Not for food-contact or structural glazing.

## **APPLICATION TEMPERATURE**

+5 °C to +45 °C

## **PACKAGING**

280ml cartridge.

Other sizes may be available.

## **HANDLING AND STORAGE**

Shelf life: 15 months in unopened packaging.

Storage: +5 °C to +27 °C, humidity 30-70%.

Don't return used material to the container.

## **HEALTH AND SAFETY**

- Keep out of reach of children
- Read all safety instructions
- Refer to MSDS for full guidance

## **IMPORTANT NOTE**

- Data may change
- Users must confirm suitability
- No liability for misuse

## **GUARANTEE**

We agree that **Weber** products meet the product specifications and will be free from any defect. Any guarantee with regard to the performance of **Weber** products will be subject to its professional and practical application of **Weber** products in accordance with our instructions and specifications. However, we have no influence over specific site conditions and therefore, if in doubt, the user should first carry out sufficient tests to ensure that the product is suitable. In special cases, obtain advice. Should our product prove defective, we undertake to replace any defective material. This guarantee will fall away in the event of **Weber** products being contaminated by the addition of sand, cement or substance other than recommended by us.

## **TECHNICAL SERVICES**

**Weber** has a team of experienced advisors available to provide technical support. Technical helpline: **0786181915** or <https://www.saint-gobain-africa.com/en/zimbabwe> .