

GYPREX®

12.5 mm CEILING TILES

Advantages



Durability: Gyprex® is a robust tile with resistance to scratches and dents.



Ease of maintenance: The vinyl surface of Gyprex® ceiling tiles can be cleaned using a damp cloth with water and a mild detergent.



Recyclability: Gyprex® ceiling products' core is manufactured from natural, recyclable materials.

Gyprex® is a vinyl-faced tile with a gypsum core combined with Gypframe® exposed ceiling grid to form a lay-in tile suspended ceiling. It has a tough washable vinyl finish, bonded to the RhinoBoard® and it is ideal for use in a range of commercial and residential ceiling applications. The gypsum core is 100% recyclable. Available in white and fissured finish.

GYPREX®

12.5 mm CEILING TILES



Description	Value	Reference standard
Thickness	12.5 mm	-
Edge Type	Square (A)	-
Dimensions	12.5 mm - (1200 x 600); (600 x 600)	-
Weight (kg/m ²)	12.5 mm - Approx. 7.95 kg/m ²	-
Reaction to fire	12.5 mm - Non-Combustible	SANS 10177-5

Usage

Ideally suited for environments where economical installation and low maintenance are primary considerations.

Consult the latest version of SANS 10400-T for suitable areas of use.

Ceiling Tile Performance

Reaction to Fire

Standard	Thickness of tile (mm)	Performance
SANS 10177-5	12.5 mm	*Non-Combustible

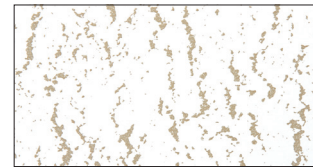
*According to SANS 10400-T, non-combustible products can be used in all occupancies. For combustible ceiling tiles, we recommend consulting a building professional to verify the suitability of use in specific applications.

Gyprex® 12.5 mm

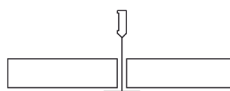
White



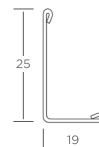
Fissured



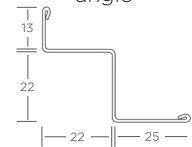
Edge Detail for Gypframe® Essential exposed grid



Trim detail for Gyproc M6 wall angle



Trim detail for Gyproc SM25 recessed wall angle



Environment

Gyprex® tiles are suitable for use in areas that are not subject to continuous damp conditions. The tiles are not suitable for use above 70% relative humidity, or in temperatures consistently above 49°C. They can be exposed to freezing temperatures without a risk of damage.

Fixtures

The strength of Gyprex® tiles will support a point load of 1 kg for maximum L/360 deflection. This will normally allow fittings such as spot light or down lighters to be installed without the need for additional support.



GYPROC a division of Saint-Gobain Construction Products SA (Pty) Ltd

300 Janadel Avenue • Halfway House
• Midrand 1686 • South Africa

PO Box 50416 • Randjiesfontein
• 1683 • South Africa

+27 (0)12 657 2800

www.gyproc.co.za

SAINT-GOBAIN CONSTRUCTION PRODUCTS SOUTH AFRICA (PTY) LTD.
Reg no: 1937/010220/07