

# Gamatex™

## Gamazine acrylic finishing plaster



### DESCRIPTION

**Weber Gamatex™** is a trowel applied textured acrylic bonded plaster available in a variety of colours. This product contains selected graded aggregates to produce a grooved finish that will result in various patterns.



Trowel application



Two style patterns



Exterior and interior

### USES

Suitable for exterior or interior use on either plastered or painted walls that have been properly prepared. Textured finishing plaster, available in a variety of colours negating the need to apply a paint finish. May be sealed to further enhance and protect the wall surface with a suitable sealer. Supplied ready to be used.

### FEATURES & BENEFITS

- Vertical texture effect
- Swirling texture effect
- Superior adhesion
- For exterior and interior application
- For plastered and painted walls

### PHYSICAL PROPERTIES

Drying time	Approx. 12 hrs (surface dry = 2 hrs, hard dry = 12 hrs) depending on weather conditions (temperature and humidity).
Pot life	Approx. 4 hrs
Curing time (before sealing if required)	7 days to fully cure but sealing coat can still be applied after 12 hrs when it is hard dry.

### COVERAGE

Coverage is approximately 5–6 m<sup>2</sup> per 25 kg bucket (1 coat) at 2.5 mm thick (aggregate size less than 2.5 mm).

### SURFACE PREPARATION

The substrate must conform to a smooth and even finish. This can be achieved with a fine wood float or a steel float. Prepare the substrate appropriately to ensure that the surface is clean, dry and sound. Apply primer where required.

### MIXING

Wet ready mixed in bucket. Do not thin. Do not add water. Mix and apply.

### APPLICATION

Apply **Weber Gamatex™** with a steel trowel and then float with a plastic trowel to match the approved colour and pattern (vertical or random). Should be applied onto fully cured sand cement plaster or plaster with <15% moisture.

OPTIONAL: If required apply a suitable sealer to seal and protect the coating.

### APPLICATION TIPS

Do not apply:

- If frost is forecast within 24 hrs of use
- In damp / wet conditions
- In temperatures below 5 °C or above 30 °C
- In direct sunlight

Best to begin application early in the morning, when it is cooler. Equipment should be cleaned with water immediately after the application has been completed.

Please note: Correct surface preparation is critical to ensure the proper performance of **Weber Gamatex™**. Please follow the instructions carefully.

## PACKAGING

**Weber Gamatex™** is supplied in a 25 kg bucket.

## COLOURS

Batch control: To ensure colour consistency per project, it is recommended that material from the same batch be used to eliminate possible colour variation. Although the product is UV resistant, some fading may occur over time. **Weber Gamatex™** is available in 8 different colours.

## STORAGE AND SHELF LIFE

Store unopened in a dry place at temperatures above 5 °C and below 30 °C. Shelf life is 12 months from date of manufacture. Replace and secure lid after use.

## PRECAUTIONS

Use eye protection and gloves and avoid prolonged skin contact. Wash skin contamination away with warm soapy water. Remove splashes to the eyes by prolonged irrigation and consult a doctor. Do not ingest. This product is water based and non-toxic. It does contain chemicals that may be irritants to the skin. Appropriate protective clothing must be worn. Protect eyes and skin from exposure.

Ensure adequate ventilation and ensure the use of proper ventilated masks. Wash spillages immediately with water. Do not induce vomiting if swallowed. Consult a physician if irritation of skin persists or if product is ingested. Gather up environmental spillages, and dispose of in accordance with regulations of the local authorities. For renovation projects prepare existing surfaces and prime using a suitable primer.

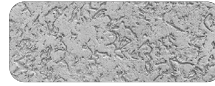
## GUARANTEE

We agree that **Weber** products meet the product specifications and will be free from any defect. Any guarantee with regard to the performance of **Weber** products will be subject to its professional and practical application of **Weber** products in accordance with our instructions and specifications. However, we have no influence over specific site conditions and therefore, if in doubt, the user should first carry out sufficient tests to ensure that the product is suitable. In special cases, obtain advice. Should our product prove defective, we undertake to replace any defective material. This guarantee will fall away in the event of **Weber** products being contaminated by the addition of sand, cement or substance other than recommended by us.

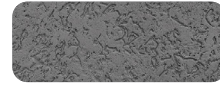
## TECHNICAL SERVICES

**Weber** has a team of experienced advisors available to provide technical support. Technical helpline: 08600 WEBER (93237) or visit [www.za.weber](http://www.za.weber).

## Weber Gamatex™ colour palette - Swirling Texture Effect



Light Grey



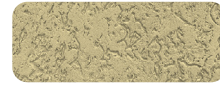
Mid Grey



Charcoal



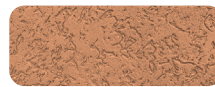
Beige



Yellow



Chocolate



Apricot



Burgundy

## Weber Gamatex™ colour palette - Vertical Texture Effect



Light Grey



Mid Grey



Charcoal



Beige



Yellow



Chocolate



Apricot



Burgundy

These colours are provided as a guidance only and exact colour matches will be dependent on the surface condition.

