



CREATE YOUR

MASTERPIECE

AUTOMOTIVE DETAILING

WHO ARE FARÉCLA?

Farécla Products Ltd is a UK, family-owned company, manufacturing surface finishing products which are used on a wide variety of substrates worldwide. For over 60 years Farécla has worked closely with paint manufacturers to develop their paint rectification products and has provided surface finishing solutions to automotive bodyshops, detailers, boat builders, wood workers, composite and mould manufacturers. Launched in 1952, the brand now sells in over 120 countries. Farécla put this technology into the G3 Professional range which are the No.1 choice for surface finishing around the world.

FIG 1: In-house laboratory and testing facilities



FIG 2: Unique Farécla abrasive powder



What's clever about G3 Pro formulas?

G3 Professional formulas have been engineered at a molecular level by our experienced technical team and scientists to make them user friendly, effective and suitable for use on multiple surfaces. Technically advanced formulas developed where relevant alongside paint and lacquer manufacturers make them safe and effective for all paint types and surfaces in many sectors including automotive, marine, aerospace and wood.

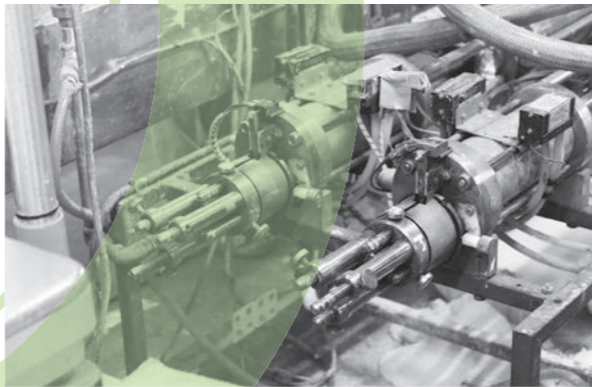


FIG 3: UK based factory and filling lines

FOR PERFECTLY DETAILED SURFACES

G3 Professional formulas are a range of detailing products designed to **CLEAN**, **RESTORE** and **FINISH** surfaces such as automotive paintwork, boat surfaces and wood lacquers, amongst others. These sections help organise the order that the products are used in the perfect detailing process, even though some products fit into multiple categories.

CLEAN

A clean surface is essential before rectifying surfaces. Contaminants can cause surface defects such as scratches or dulling, and odours or bad smells, if they are not removed before the restoring and finishing stages. Cleaning with G3 Pro products facilitates safe removal of these contaminants, with very little contact between the surface and your hands. This process allows you to move on to rectifying the newly cleaned surface.

RESTORE

After the surface is clean, any defects, from faded paintwork to swirl marks and light scratches, will be more clearly visible. G3 Pro products use Engineered Abrasive Technology (E.A.T.s) to **PERMANENTLY** remove these defects, leaving a smooth, shiny surface. This process produces a perfectly, defect-free area that is ready to be sealed and protected.

FINISH

This process will protect the work you have put into cleaning and restoring the vehicle. Interior surfaces will be left looking and smelling like new, exterior bodywork, wheels and engine bays will be given a water-repellent, deep gloss finish. All surfaces will have a high level of protection and be far easier to clean next time around.

INTERIOR DEEP CLEANING

Remove carpets and mats, then vacuum all interior



**PRIOR TO
DETAILING**

**FABRIC
SEATS**
*G3 Pro
Multicleaner*



**LEATHER
SEATS**
*G3 Pro
Leather Cleaner*



**FRESHEN
THE AIR**
*G3 Pro
Odour Eliminator*



**FABRIC
PROTECTION**
*G3 Pro
Fabric Protectant*



**LEATHER
PROTECTION**
*G3 Pro
Leather Protectant*



**CLEAN &
DRESS**
*G3 Pro
Super Dressing*



**WINDOWS
& MIRRORS**
*G3 Pro
Glass Cleaner*



TIP: For cool climates pre-wet the exterior with water before interior detailing to help loosen and soften the dirt.

CAUTION: In warm climates do not pre-wet. Jet washing with hard, dry contaminants on the surface may cause paint damage. Use **G3 Pro Snow Foam** to soften dirt.

Also spray **G3 Pro Odour Eliminator** on fabric surfaces to remove odours.

Use **G3 Pro Super Dressing** on rubber, vinyl and plastics.

INTERIOR FINISHING, SHINE & PROTECTION

EXTERIOR BODYWORK CLEANING



PRE-CLEAN

G3 Pro Snow Foam



GENERAL CLEAN

G3 Pro Wash & Wax or High Shine Shampoo



DEEP CLEAN

G3 Pro Rapid Detailer and Deep Clean Clay Mitt



QUICK CLEAN

G3 Pro Rapid Detailer or Multicleaner



WHEEL & TYRE DETAILING

This process can be done before or after **EXTERIOR BODYWORK CLEANING**. This allows for dressing to be removed if it gets onto bodywork. However, dirt from the bodywork will slide down onto wheels.



PRE-CLEAN

G3 Pro Snow Foam, Wash & Wax or High Shine Shampoo



CLEAN

G3 Pro Wheel Cleaner



Pre-clean if dirt is excessive.

Use **G3 Pro Wheel Cleaner** on the bodywork around the wheel to remove brake dust.



QUICK PROTECTION

G3 Pro Tyre Shine Liquid



DURABLE PROTECTION

G3 Pro Tyre Shine Gel



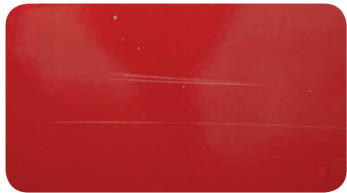
Create either an 'as new' or 'wet look' finish.

Create either an 'as new' or 'wet look' finish.

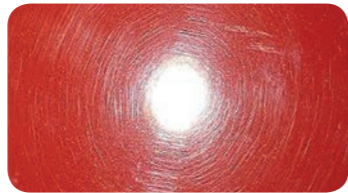
PAINT RECTIFICATION

- A KEY ELEMENT OF DETAILING

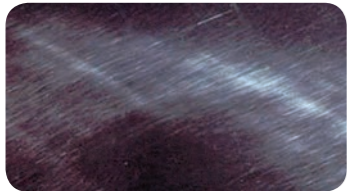
Paint rectification on cars and other vehicles deal with the surface area of the bodywork. From time to time, surfaces can become damaged from scrapes and chemical damage. Rectifying means bringing the surface finish back to its original showroom look.



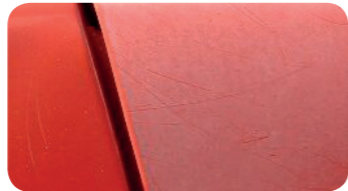
LIGHT SCRATCHES & SCUFFS - These are often caused by hedgerows and tree branches scraping along the bodywork, bunches of keys bouncing against the car, buttons on clothing, supermarket trolleys and pushchair handles rubbing along the car.



SWIRL MARKS - These are spider web-like circular fine lines that show up in bright sunlight. Often more visible on metallic and clearcoat lacquered surfaces. They are caused by automatic car wash brushes and general cleaning with unclean materials.



HOLOGRAMS - These are like swirls but are finer and give a 3D effect. They are caused by bad technique when using a machine polisher.



FADING / DULLING & CHALKING - This is when UV rays from the sun break down the surface shine over time. Airborne city pollutants can have the same effect, causing the surface to appear cloudy and pale.

EXTERIOR BODYWORK RECTIFICATION



**SCRATCH
REMOVAL**

**G3 Pro
Scratch Remover**
Liquid or Paste



**FADING &
MINOR
DEFECTS**

**G3 Pro
Paint Renovator or
Colour Restorer**



**MINOR
DEFECTS &
PROTECTION**

**G3 Pro
Cut & Wax**



**METAL
CLEANING &
RESTORING**

**G3 Pro
Metal Polish**



All our **RESTORE** products are **PERMANENT** (they do not contain fillers). **G3 Pro Scratch Remover** will remove or diminish the look of scratches. Occasionally this may result in dulling / fading which can be rectified using **G3 Pro Paint Renovator, Colour Restorer** or **Cut & Wax**.

CAUTION: Not suitable for lacquered or plated metal.

EXTERIOR BODYWORK PROTECTION & SHINE



**SEAL THE
RESTORED
SURFACE**

**G3 Pro
Surface Sealant**



**CHOOSE
A WAX**

**G3 Pro
Spray Wax,
Resin Superwax or
SuperGloss Paste Wax**



**WINDOWS
& MIRRORS**

**G3 Pro
Glass Cleaner**



ENGINE CLEANING & DRESSING

*This process is carried out before
EXTERIOR BODYWORK RECTIFICATION.*



CLEAN

**G3 Pro
Snow Foam
or
Multicleaner**



**CLEAN,
RESTORE &
DRESS**

**G3 Pro
Super Dressing**



**QUICK
CLEAN**

**G3 Pro
Multicleaner**



Spray either **G3 Pro Snow Foam** or **G3 Pro Multicleaner** onto the engine with a lance / jet / pressure washer. Agitate with a brush.

G3 Pro Super Dressing is also a light cleaner.

Use **G3 Pro Multicleaner** directly from its trigger spray for cleaning touch-ups.



G3 Professional Snow Foam

G3 Pro Snow Foam is a pH neutral cleaner, safe for all surfaces and paint finishes. It is ideal for touchless cleaning before full exterior work and doesn't strip off previously applied sealants or waxes. High foaming action softens and lifts dirt, making it easier and safer to remove damaging particles without touching the surface. Use before the shampoo or wash & wax stage.

DIRECTIONS

- 1 - Add 30ml of Snow Foam to 120ml of water (150ml of solution in total) in a jet / pressure washer (150ml is enough for an average size family saloon)
- 2 - Spray over the whole vehicle, and leave until the foam starts to drip off
- 3 - Rinse with clean water from a hose or jet / pressure washer

TIP: Can be used as a shampoo - 2 capfuls to a 15 ltr bucket of lukewarm water.

7205 500ml e

G3 Professional High Shine Shampoo

Before starting any kind of surface restoration or wax application, it is imperative that all loose debris and dirt has been removed to prevent scratching. **G3 Pro High Shine Shampoo** removes surface contaminants to leave your surface thoroughly clean and prepared for renovation, scratch removal and waxing. The concentrated, low-sud formula allows you to check the surface as you're cleaning.

DIRECTIONS:

- 1 - Squirt a small quantity of **G3 Pro High Shine Shampoo** into a bucket of warm water and mix well
- 2 - Apply with a clean **G3 Pro Lambs Wool Wash Mitt** in small sections using a circular motion
- 3 - Use a 2 bucket system: Rinse the mitt in a separate bucket of warm water to remove dirt between washing each section of your vehicle
- 4 - Rinse the vehicle with clean water

CAUTION: Do not use the water from the buckets to rinse the vehicle.

7192 500ml e





G3 Professional Wash & Wax

G3 Pro Wash & Wax is a highly concentrated formulation, safe on all surfaces and has a high foaming action. Its slick, smooth formula, softens and removes harsh contaminants without scratching, leaving a high shine, protective layer.

DIRECTIONS

- 1 - Use one bucket of **G3 Pro Wash & Wax** solution and one bucket of warm, clean water
- 2 - For the **G3 Pro Wash & Wax** solution, use approximately 2 capfuls per 15 ltr bucket
- 3 - Use a **G3 Pro Lambs Wool Wash Mitt**, washing it in the clean water between each application
- 4 - After washing, rinse off soapy residue from the surface, then dry with a clean, dry **G3 Pro Drying Towel**

NOTE: Does not remove existing wax layers.

7206 500ml e

G3 Professional Lambs Wool Wash Mitt

Used to wash your vehicle along with **G3 Pro High Shine Shampoo** or **G3 Pro Wash & Wax**, the **G3 Pro Lambs Wool Wash Mitt** is made of soft and delicate material to prevent damage to your vehicle surface during cleaning.

7237 (1 mitt)

G3 Professional Drying Towel

This dual purpose, double-sided, low linting **G3 Pro Drying Towel** is used to dry large areas effortlessly (high pile side). The microfibre technology (short pile side) attracts and lifts dirt, dust and grease from any surface. It can absorb 8 times its weight in water, and the soft edging will not scratch surfaces. Ensure the towel is spotlessly clean before use as dirt can damage surfaces when in use.

7238 (1 towel)





G3 Professional Rapid Detailer

G3 Pro Rapid Detailer is a mild cleanser for use between washes to prevent the build-up of contaminants that can become ingrained into your paintwork. It removes light dirt, dust and fingerprints and leaves a 'just-waxed', high gloss finish without stripping previously applied polishes and waxes from the surface. It is a safe product that can be used everyday.

DIRECTIONS

- 1 - Working in sections, lightly spray the area to be cleaned with **G3 Pro Rapid Detailer**
- 2 - Spread product evenly using a dry, clean microfibre
- 3 - Buff off immediately with a soft, clean, dry cloth using light circular motions, or use with **G3 Pro Deep Clean Clay Mitt** to remove ingrained dirt particles which can cause dulling / fading over time

CAUTION: Keep the **G3 Pro Deep Clean Clay Mitt** lubricated during use, and clean & dry during storage.

7193 500ml e



G3 Professional Deep Clean Clay Mitt

This revolutionary, re-usable **G3 Pro Deep Clean Clay Mitt** uses an advanced rubber polymer technology that easily removes ingrained dirt, bugs, tar spots and dulling pollutants from paintwork, windscreens and headlights.

DIRECTIONS

- 1 - Clean bodywork with **G3 Pro High Shine Shampoo** or **G3 Pro Wash & Wax**
- 2 - Spray **G3 Pro Rapid Detailer** onto the selected work area and the mitt
- 3 - Gently work the mitt over the lubricated surface with light pressure without letting it dry
- 4 - Wipe away any residue with a clean, dry microfibre cloth or **G3 Pro Super Soft Microfibre Fleece**
- 5 - Before re-using, rinse off accumulated contaminants on the mitt with water.

7191 (1 mitt)



G3 Professional Multicleaner

G3 Pro Multicleaner is a rigorous yet safe cleaner for use on all soft and hard surfaces, including wheel arch liners, engine bays, carpets and upholstery. It is a silicone-free product that will not discolour rubber, plastics, vinyl or fabric. For maximum performance use neat, but it can be diluted with water for lighter contamination.

DIRECTIONS

INTERIOR - Thoroughly vacuum interior before use

- 1 - Spray onto the area to be cleaned
- 2 - Wipe clean, removing any residue

EXTERIOR

- 1 - Spray onto the area to be cleaned
- 2 - Agitate with a brush or microfibre cloth. Repeat for heavily soiled areas
- 3 - Wipe clean, removing any residue

NOTE: Powerful on stubborn marks, breaking down oil and grease. Use in a jet / pressure washer for engine bays.

7199 500ml e

G3 Professional Leather Cleaner

G3 Pro Leather Cleaner has a foaming action which reaches deep into soiled areas and lifts dirt making it easy to wipe away. It leaves a natural, 'new look' finish, and a safe, non-slippery surface. It can also be used in the home on leather furniture.

DIRECTIONS

- 1 - Spray liberally onto leather
- 2 - Agitate to a lather with a soft brush and work into the leather seats
- 3 - Wipe clean with a clean, dry microfibre cloth and allow to dry naturally

TIP: Try using in the home on leather furniture



7200 500ml e



G3 Professional Wheel Cleaner

G3 Pro Wheel Cleaner is a touchless cleaner for all wheel types, including alloys, steel, chrome, painted and plastic trims. The colour changing technology activates as brake dust and other iron rich contaminants dissolve. It is non-staining, can be used on bodywork around the wheel and the gel formula clings to the wheel surface for maximum effect.

DIRECTIONS

- 1 - Rinse the wheels prior to use, ideally with a jet / pressure washer
- 2 - Spray liberally onto wheels that are cool to the touch
- 3 - If needed, agitate stubborn areas with a brush
- 4 - Spray onto the wheel arches and above and behind the front and back wheels to safely remove brake dust
- 5 - Before product dries (2 to 5 minutes), wash off

CAUTION: Do not wash microfibre cloth in washing machine after using on wheels.

7209 500ml e

G3 Professional Odour Eliminator

G3 Pro Odour Eliminator is a silicone-free, anti-bacterial liquid spray which engulfs the chemicals responsible for bad smells. It kills the bacteria and leaves a long lasting, mild, fresh fragrance.

DIRECTIONS

- 1 - Spray a mist high into the cabin or directly onto the fabric
- 2 - Once sprayed, close all windows and doors
- 3 - Once the spray has settled, open doors or windows and allow fresh air in
- 4 - Wipe any damp surfaces with a clean, dry microfibre cloth or **G3 Pro Super Soft Microfibre Fleece**

NOTE: G3 Pro Odour Eliminator eliminates bad smells instead of masking them.

7198 500ml e





G3 Professional Scratch Remover Paste

Using Engineered Abrasive Technology particles, **G3 Pro Scratch Remover Paste** permanently removes minor scratch marks that do not stop your fingernail when run over the surface. The appearance of deeper scratches will be diminished. The paste is thick and easy to control, making it ideal for small areas.

DIRECTIONS

- 1 - Ensure surface is spotlessly clean, dry and cool
- 2 - Dampen a **G3 Pro White Applicator Waffle Pad**
- 3 - Apply a small amount to the applicator
- 4 - Apply even pressure in a straight back and forth motion starting left to right and then up and down
- 5 - Stop once the scratch is removed or if the paint begins to fade. If dulling appears DON'T PANIC! Simply use **G3 Pro Paint Renovator** or **G3 Pro Colour Restorer** with a clean **G3 Pro White Applicator Waffle Pad**. This is most likely on darker paints
- 6 - Remove residue with a soft, clean, dry cloth

7163 150ml e

G3 Professional Scratch Remover Liquid

Using Engineered Abrasive Technology particles, **G3 Pro Scratch Remover Liquid** permanently removes minor scratch marks that do not stop your fingernail when run over the surface. The appearance of deeper scratches will be diminished. The liquid spreads easily and is ideal for larger areas.

DIRECTIONS

- 1 - Ensure surface is spotlessly clean, dry and cool
- 2 - Dampen a **G3 Pro White Applicator Waffle Pad**
- 3 - Apply a small amount to the applicator
- 4 - Apply even pressure in a straight back and forth motion starting left to right and then up and down
- 5 - Stop once the scratch is removed or if the paint begins to fade. If dulling appears DON'T PANIC! Simply use **G3 Pro Paint Renovator** or **G3 Pro Colour Restorer** with a clean **G3 Pro White Applicator Waffle Pad**. This is most likely on darker paints
- 6 - Remove residue with a soft, clean, dry cloth

7164 500ml e





G3 Professional Paint Renovator

G3 Pro Paint Renovator uses a mild blend of Engineered Abrasive Technology to effectively remove swirl marks and other small blemishes, as well as restore colour and shine to faded bodywork panels. For best results, prepare by washing the surface with **G3 Pro High Shine Shampoo**, and finish with **G3 Pro Spray Wax**, **G3 Pro Resin Superwax** or **G3 Pro SuperGloss Paste Wax** for the ultimate protection and shine.

DIRECTIONS

- 1 - Make sure panels are clean and cool. Lightly dampen a **G3 Pro White Applicator Waffle Pad**
- 2 - Apply a small amount of the **G3 Pro Paint Renovator** to the applicator
- 3 - Use a straight back and forth motion - left to right, then up and down
- 4 - Apply even pressure and repeat until a desired finish is achieved
- 5 - Remove residue with a soft, clean, dry cloth

7165 500ml e



G3 Professional Colour Restorer

G3 Pro Colour Restorer uses a high grade of light polishing abrasives to permanently remove minor defects such as micro-scratches, light oxidation, holograms and tree sap that cause dulling and fading. This will bring paint back to its original showroom condition. For best results, prepare by washing the surface with **G3 Pro High Shine Shampoo**, and finish with **G3 Pro Spray Wax**, **G3 Pro Resin Superwax** or **G3 Pro SuperGloss Paste Wax** for the ultimate protection and shine.

DIRECTIONS

- 1 - Make sure panels are clean and cool. Lightly dampen a **G3 Pro White Applicator Waffle Pad**
- 2 - Apply a small amount of the **G3 Pro Paint Renovator** to the applicator
- 3 - Use a straight back and forth motion - left to right, then up and down
- 4 - Apply even pressure and repeat until a desired finish is achieved
- 5 - Remove residue with a soft, clean, dry cloth

7195 500ml e



G3 Professional Cut & Wax

G3 Pro Cut & Wax is a mild abrasive polish designed to remove minor surface defects such as swirl marks, holograms and oxidation leaving a thin, protective layer of Carnauba wax for a high gloss shine. Does 2 jobs in 1!

DIRECTIONS

- 1 - Ensure surface is spotlessly clean, dry and cool
- 2 - Apply to the surface or a microfibre cloth
- 3 - Lightly rub on the surface in a back and forth, up and down motion
- 4 - Allow to dry to a haze
- 5 - Buff with a clean, dry microfibre cloth to a high gloss shine

NOTE: Can be applied by hand or machine.

7208 500ml e



G3 Professional Metal Polish

G3 Pro Metal Polish is a mild abrasive which rapidly removes oxidation and staining, and contains anti-corrosive agents that leave a protective, high shine layer on non-lacquered or plated metal.

DIRECTIONS

- 1 - Apply a small amount to a clean, dry microfibre cloth
- 2 - Rub gently over the metal surface
- 3 - Buff to a shine and remove any residue with a clean, dry microfibre cloth

CAUTION: Not suitable for lacquered or plated metal.

7207 500ml e



G3 Professional Surface Sealant

G3 Pro Surface Sealant creates an invisible, durable, hydrophobic layer with bonding silicones to help protect against road salts, tree sap, bird lime, acid rain etc. Easy to wax over for an enhanced lustre. Use after restoring your vehicle's bodywork to protect the rectified paint finish.

DIRECTIONS

- 1 - Ensure surface is spotlessly clean, dry and cool
- 2 - Working in approximately 1m² sections, spray a light layer evenly over the surface.
- 3 - Immediately wipe down with a clean, dry microfibre cloth, buffing to a gloss finish

7210 500ml e

G3 Professional Super Dressing

G3 Pro Super Dressing removes dirt, dust, grime, chocolate and many other stubborn contaminants, without leaving a slippery surface. Dries quickly to leave a subtle, 'new look' sheen. Can be used as an engine dressing after cleaning with **G3 Pro Snow Foam** or **G3 Pro Multicleaner** when applied with a brush and/or a clean, dry microfibre cloth.

DIRECTIONS

- 1 - Spray sparingly onto the surface or a clean, dry cloth
- 2 - Wipe on to clean, then buff off with a clean, dry microfibre cloth to leave a natural finish
- 3 - Further applications will build the gloss level if a high shine finish is desired

7201 500ml e





G3 Professional Fabric Protectant

G3 Pro Fabric Protectant creates a durable barrier over freshly cleaned surfaces to repel dirt and grime. You only need to spray enough protectant onto the fabric so that it dampens the surface.

DIRECTIONS

- 1 - Fabric must be cleaned, using **G3 Pro Multicleaner**, and allowed to dry
- 2 - Shake well
- 3 - Spray a light mist onto the fabric and allow to dry. It is advisable to spray high use areas first and more generously
- 4 - Allow fabric to dry (ideally overnight) for the treated area to be fully protected

NOTE: Drying times are climate dependent

7204 500ml e

G3 Professional Leather Protectant

G3 Pro Leather Protectant keeps leather supple and easy to clean, providing a non-slippery, long lasting natural finish and creates an invisible barrier, protecting your leather for up to 6 months.

DIRECTIONS

- 1 - Always clean the leather surface with **G3 Pro Leather Cleaner** prior to using **G3 Pro Leather Protectant**
- 2 - Apply the protectant using a clean, dry microfibre cloth, and then allow to soak for 1 to 2 minutes
- 3 - Buff with a clean, dry microfibre cloth to finish

TIP: Try using in the home on leather furniture

7203 500ml e





G3 Professional Tyre Shine Liquid

Rapid Tyre conditioner that gives an 'as new look' or a 'high shine' finish, **G3 Pro Tyre Shine Liquid** is very quick and easy to apply, will not degrade your tyres in any way, even when used on a regular basis. Helps prevent discolouration and premature cracking.

DIRECTIONS

- 1** - Tyres must be spotlessly clean, and for optimum performance, dry
 - 2** - Apply a few light mists directly to tyre wall
- FOR A NEW TYRE LOOK**
- 3** - Spread across the surface as thinly and evenly as possible using a clean, dry microfibre cloth
- FOR A HIGH SHINE WET LOOK**
- 3** - Allow the product to dry naturally on the tyre wall. Increase the shine with further applications

7212 500ml e



G3 Professional Tyre Shine Gel

Durable tyre conditioner that gives an 'as new look' or a 'high shine' finish. **G3 Pro Tyre Shine Gel** is easy to apply, eliminates the mess of sling, drips and streaks, contains no silicones or paint that can prevent the rubber breathing, and prevents discolouration and premature cracking.

DIRECTIONS

- 1** - Tyres must be spotlessly clean, and for optimum performance, dry
 - 2** - Add a small amount to a microfibre cloth, wipe onto the tyre wall and work into the surface with a brush
- FOR A NEW TYRE LOOK**
- 3** - Wipe off before the product dries
- FOR A HIGH SHINE WET LOOK**
- 3** - Leave product to dry fully before driving in order to avoid sling. Add more applications for an increased gloss

TIP: Dilute with water (ratio 1:1) for sprayable application.

7213 500ml e



G3 Professional Spray Wax

G3 Pro Spray Wax enhances the surface gloss level and prolongs previously applied wax finishes. It is silicone-free, temperature insensitive and contains UV inhibitors. Does not stain rubber or plastics. Use on wet or dry paintwork, gel coats or lacquered surfaces to quickly restore that 'just waxed' look.

DIRECTIONS

- 1 - Ensure surface is spotlessly clean, dry and cool
- 2 - Spray onto the surface or a clean, dry microfibre cloth
- 3 - Wipe over the surface until the product disappears
- 4 - After drying, re-apply to add further protective layers as desired and buff to a shine

7211 500ml e

G3 Professional Resin Superwax

G3 Pro Resin Superwax is an interlinked protection system constructed from the highest grade Carnauba, montanic and paraffin waxes to provide an easy to apply concentrated wax with unprecedented protection for up to 4 months and mirror gloss finish. The wax protects bodywork from the everyday traffic film that builds up on the surface. The unique interlinked protection system combines paraffin wax for spreading, montanic wax to speed buffing time and hard Carnauba wax for a tough glaze protection.

DIRECTIONS

- 1 - Shake bottle well before use and ensure surface is spotlessly clean, dry and cool
- 2 - Apply a small amount of wax to the **G3 Pro Black Applicator Waffle Pad**
- 3 - Use circular overlapping motions with even pressure, avoiding plastic trims
- 4 - Allow to haze up and buff to a mirror finish with a soft, clean, dry cloth

7166 500ml e





G3 Professional SuperGloss Paste Wax

G3 Pro SuperGloss Paste Wax is a highly refined wax to create the perfect blend for even application. Made with selected hydrocarbons, microwaxes and high grade Carnauba wax, the results are an exceptional ultra high gloss finish and up to 6 months protection.

DIRECTIONS

- 1** - Ensure surface is spotlessly clean, dry and cool
- 2** - Apply **G3 Pro SuperGloss Paste Wax** with the supplied **G3 Pro Black Applicator Waffle Pad**
- 3** - Work in an overlapping circular motion with an even pressure, avoiding plastic trims
- 4** - Allow to haze up
- 5** - Buff with a clean, dry microfibre cloth to obtain a super gloss finish

7177 200g e

G3 Professional Glass Cleaner

G3 Pro Glass Cleaner is a powerful, high performance cleaner that cuts through dirt, grime and road film without leaving smears, streaks or rainbows when using window wipers. It is designed to provide excellent clarity.

DIRECTIONS

- 1** - Lightly mist onto all windows, wing mirrors and indicators
- 2** - Gently wipe clean with a clean, dry microfibre cloth
- 3** - Turn the cloth over to the clean side and buff to a finish



7202 500ml e

G3 Professional Applicator Waffle Pads

The **G3 Pro Applicator Waffle Pads** reduce effort and increase effectiveness when applying G3 Pro products. Their unique surface minimises wastage and ensures you get the ultimate finish in the shortest time.

White Applicator Waffle Pad:

Use damp with **G3 Pro Scratch Remover, Paint Renovator** or **Colour Restorer** in a back and forth motion whilst applying even pressure.

Black Applicator Waffle Pad:

Use with **G3 Pro Resin Superwax** or **SuperGloss Paste Wax** in an overlapping circular motion whilst applying even pressure.

After using either pad, once a suitable finish is achieved, remove any residue and buff with a dry clean microfibre cloth.

CAUTION: After use remove and clean dirt and dried product from the applicator pads. Never use dirty pads!

7167 (2 pads)



G3 Professional Super Soft Microfibre Fleece

The super soft, non-scratching fibres make this **G3 Pro Super Soft Microfibre Fleece** safe to use on all paint surfaces. Make sure surfaces are cool before polishing. Keep clean and free of dirt particles to prevent surface damage.

DIRECTIONS

- 1** - Clean dirt and grime from surfaces before use
- 2** - Use a clean, dry **G3 Pro Super Soft Microfibre Fleece** to dry, apply or wipe away excess residue

CAUTION: Always keep the fleece clean before use. Dirt particles can damage surfaces, causing light scratches. This fleece is machine washable.

7239 (1 fleece)



AUTUMN & WINTER VEHICLE CARE GUIDE

BAD WEATHER

Weather conditions in Autumn and Winter can be at their worst. Protect your vehicle against harsh rain, sleet and snow as best you can. To help after shampooing, try **G3 Pro SuperGloss Paste Wax** applied with a **G3 Pro Black Applicator Waffle Pad**. Use in early Autumn to protect your vehicle for about 6 months whilst adding a high gloss, professional showroom finish.



A cold, wet time of year, Autumn and Winter seasons can play havoc with your vehicle's bodywork. Here are a few steps to help you look after and protect surfaces.

INTERIOR DIRT

When it's wet and muddy outside, chances are that this will get transferred internally resulting in soiled footwells, mud smears on the plastics of the doors and scruffy seats. **G3 Pro Multicleaner** is a strong, all round cleaner that works hard on fabric and hard surfaces. **G3 Pro Leather Cleaner** penetrates deep into leather surfaces to help soften and lift dirt. **G3 Pro Super Dressing** acts as a light cleaner on hard surfaces whilst restoring them.



LONG LIFE TYRES

Wheels are one of the hardest working elements of a vehicle. The tyres, in particular, need looking after to ensure their longevity. Applying **G3 Pro Tyre Shine Gel** or **Liquid** before harsh Winter months protects the walls from the elements and cracking.



HANDY TO HAVE NEARBY

Dirty or foggy windows and mirrors can always cause an annoyance, delaying your journey time or becoming dangerous on the road. Don't use your sleeve or a tissue to clear it. Always keep a bottle of **G3 Pro Glass Cleaner** to hand for a quick and easy way to keep mirrors and the windscreen clear, with no smears coming back.



SPRING & SUMMER VEHICLE CARE GUIDE

JUST OUT OF WINTER

Wet, muddy conditions on the roads, coupled with a desire to not be outside cleaning, can develop an undesirable look for your vehicle. This means that dirt can become stubborn on your vehicle, difficult to remove easily and cause damage to your paintwork if removed with shampoo or even just sprayed with water. **G3 Pro Snow Foam** is gentle on the surface, but tough on dirt. Contaminants are softened and lifted for easy, safe removal.



As the sun comes, Spring and Summer are the seasons when you want to be out and about. Your vehicle needs to look its best. Here are a few steps to help you look after and protect surfaces.

BRIGHT & SHINY

As everything is looking shinier and cleaner after the cold, wet months, make sure your vehicle's bodywork reflects this change. Clean with **G3 Pro High Shine Shampoo** or **G3 Pro Wash & Wax** followed by a quick and easy application of **G3 Pro Resin Superwax** or **G3 Pro Spray Wax**. The surface will have that professional showroom finish as you take your Spring and Summer drives and road trips.



HIDDEN DIRT

Grit and dirt from the road can leave micro particles on your vehicle's surfaces that shampooing simply can't reach. These particles can scratch the bodywork over a long period of time which will cause dulling, hazing, swirl marks and holograms. Combat this with a **G3 Pro Deep Clean Clay Mitt** used with **G3 Pro Rapid Detailer** to pick up those micro-particles.



APPEARANCE OF DEFECTS

After the battering from the Winter months, your vehicle will have developed defects to the paintwork from scratches to fading. These will be more noticeable as days become sunnier. Using G3 Pro **RESTORE** products will easily deal with light scratches, swirl marks, holograms and dulling without using fillers. This means that the work put into rectifying the paintwork will be permanent and defects will not reappear after several washes or rainy days.





*Farécla Products Ltd, Broadmeads,
Ware, Hertfordshire, SG12 9HS*

Tel: +44 (0) 1920 465041

Fax: +44 (0) 1920 466557

E-Mail: enquiries@farecla.com

www.G3Pro.com



g3professional